






K4EDGE Server

WAN and LAN Management System



K4Edge Server

A cloud managed edge platform providing advanced SDWAN, Security, QoS, and LAN services

-  Manage up to 12 WAN sources and over 30 LAN networks
-  Cloud Managed, powerful user interface with Real-Time Metering and Analytics
-  Combine and control WAN sources with Advanced Routing and Bandwidth Bonding
-  Protect and Secure Network Integrity with Deep Packet Inspection (DPI), Traffic Policies, and VPN
-  Compact, Fanless - Rack or VESA mount

Industrial Design

- Small form factor (6"x5"x2")
- Hardened design, fanless, aluminum case
- VESA Mount kit
- 6x GE ports
- 4x USB3 expansion
 - GE compatible USB
 - 5G modem over USB

K4 Edge Applications

- Intuitive System Management locally or from the Cloud
- **Cloud Service Portal** for fleet management
- **Mobile App** management

Advanced QoS

- Deep Packet Inspection with Application, Domain, and IP filtering
- Rate, Quota, Priority management
- One-click client/group mgmt
- Priority / Shaping / Blocking

Security and performance

- Optimized Cellular/VSAT management via Cloud **K4 Mobility Management**
- Integrated stateful firewall
- DPI + CF to secure the Internet

Local Area Network Management

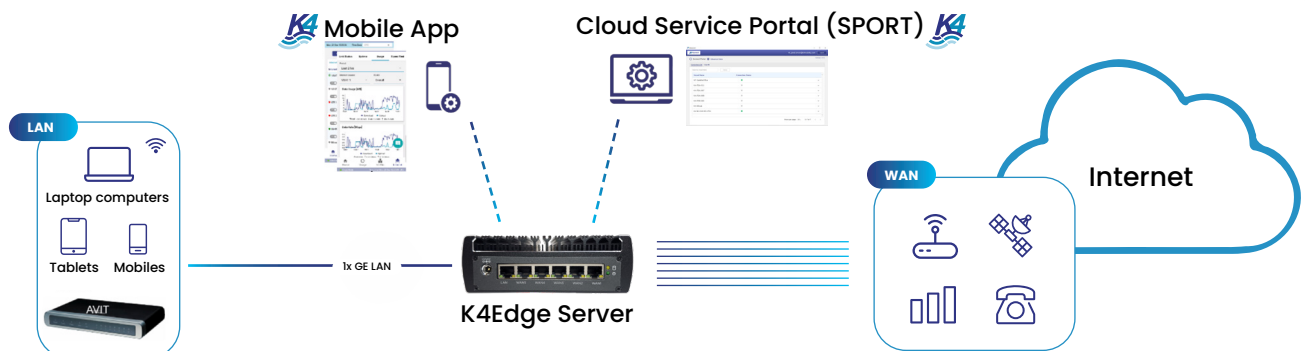
- Connected and Routed Networks
- LAN, DHCP, DNS, Bonjour/M-DNS
- App, Device, and Group QoS

Software Defined Wide Area Network - SDWAN

- WAN Link Priority and Bonding
- Lossless Advance Bonding
- USA Internet
- VPN Services

Operations

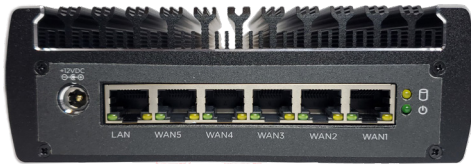
- **K4 Connect** provides remote management to Edge networks
- Role-based access with SSO
- Cloud managed - using K4's Service Portal and Mobile App





Specifications

K4Edge as a Service (KaaS) on a compact, industrial grade server



K4Edge Server - Back View



K4Edge Server - Front View

WAN Management	Supports up to 12x WAN sources
Ethernet	6x GE ports, additional 4x GE ports using USB expansion
Network Configurability	Up to 500 Clients, 30 VLAN Networks; Stateful Firewall
Compute Power	Intel i3 Dual Core 7020 at 2.3 GHz; 8 GB RAM, 128 GB Storage
Expansion	4x USB 3.0 ports - GE or 10GE ethernet; 5G modem adapter supported
Cooling	Passive, Fanless - Silent
Mounting	Standalone / VESA / Rack mount kit available
Power	+12VDC (50W Max); 100-240 VAC, 50-60 Hz (AC/DC Power Supply Included)
Physical	6.1" x 5" x 2.1" / 15.5 x 12.7 x 5.3 cm - 2.25 lbs / 1 kg
Environmental	Operating temp: -10 to +50 C; Humidity up to 95%, non-condensing
Warranty	1 year limited